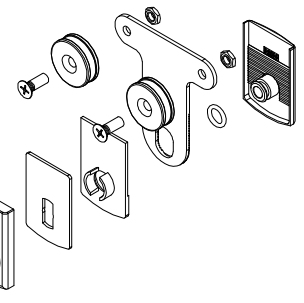


41330
14006
14009
14018

MT0193.10

4111710
3x16000
40601
3x14118
62100
40702

41299
14163
14002
40307
2xMT0193.10
MT0195.10
50205
52110



14018
14009
14006
4111810
41330

MT0195.10

41653
51602
41271/272.10
50302
42356
42241

11293
14003
40701
40601
62100
3x16000
3x14118